



### Description and Features

WM500/1 is a passive piezoelectric wideband miniature AE sensor. It is specially designed to provide a flat frequency response to acoustic emission signals over its entire frequency bandwidth.

### Technical Specs

<b>Resonant Freq.</b> Ref V/(m/s)	500kHz
<b>Frequency Range</b>	100kHz-1000kHz
<b>Sensitivity Peak</b> Ref V/(m/s)	>65dB
<b>Working Temp.</b>	-20 to 50°C
<b>Size (DxH)</b>	4.7×4.0 mm
<b>Weight</b>	13 g
<b>Case Material</b>	SUS-304
<b>Face Material</b>	SUS-304
<b>Protecting Grade</b>	IP68
<b>Connector</b>	BNC on integral cable
<b>Connector Location</b>	Side

### Applications



This sensor could be mounted in the small and tight spaces, and it is well suited for laboratory studying of surface displacement of structures due to different AE modes. It also could be used in applications requiring frequency analysis and composites research.

### Standards

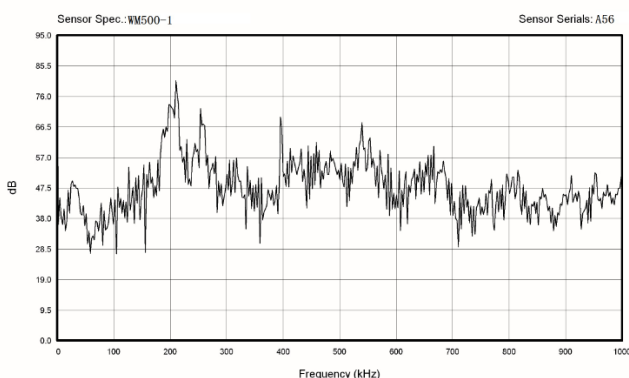


<b>Calibration standard</b>	ISO12714
	GB/T 19801

### Accessories

<b>Signal cable model</b>	SYV-50-3/ STYV-50-2
<b>Hold-down</b>	Saddle type
<b>Preamplifier</b>	PAS/PAV

### AE SENSOR CALIBRATION CERTIFICATE



### Certification



QingCheng AE Institute (Guangzhou) Co., Ltd

**Website:** [www.aendt.com](http://www.aendt.com) **Tel:** +86-20-32290092 **E-mail:** [sales2@ae-ndt.com](mailto:sales2@ae-ndt.com) **Skype:** Jessicajia  
Address: Room 601-9, Building 3, 232 Kezhu Road, Huangpu District, Guangzhou City, Guangdong Province, CHINA

Specifications subject to change without notice. Copyright @ 2022 Qingcheng AE Institute. All Rights Reserved.