



### Description and Features

WI500/1 is a passive piezoelectric wideband AE sensor with built-in preamplifier 34dB12V. It is specially designed to provide a flat frequency response to acoustic emission signals over its entire frequency bandwidth.

### Technical Specs

Resonant Freq. Ref V/(m/s)	500kHz
Frequency Range	100kHz-1000kHz
Integral preamplifier	34dB12V
Preamp. Impedance	50 Ω
Sensitivity Peak Ref V/(m/s)	>65dB
Working Temp.	-20 to 50°C
Size (DxH)	22x25.5 mm
Weight	34 g
Case Material	SUS-304
Face Material	Ceramic
Protecting Grade	IP62
Connector	SMA
Connector Location	Side

### Applications



This sensor is well suited for laboratory studying of surface displacement of structures due to different AE modes. It also could be used in applications requiring frequency analysis and composites research. It could be easily mounted by a magnetic hold-down.

### Standards

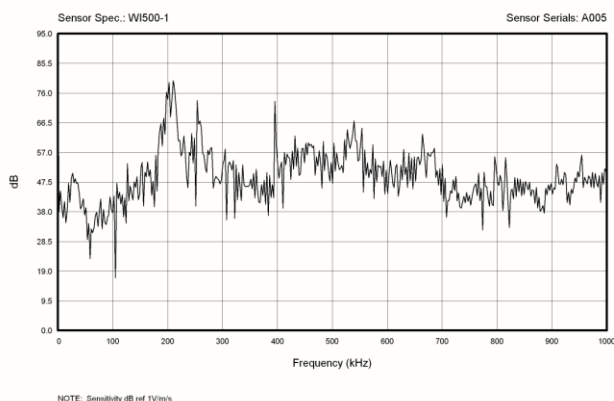


Calibration standard	ISO12714
	GB/T 19801

### Accessories

Signal cable model	RG178/RG316
Hold-down	Saddle type

### AE SENSOR CALIBRATION CERTIFICATE



### Certification



QingCheng AE Institute (Guangzhou) Co., Ltd

Website: [www.aendt.com](http://www.aendt.com) Tel: +86-20-32290092 E-mail: [sales2@ae-ndt.com](mailto:sales2@ae-ndt.com) Skype: Jessicajia  
Address: Room 601-9, Building 3, 232 Kezhu Road, Huangpu District, Guangzhou City, Guangdong Province, CHINA

Specifications subject to change without notice. Copyright @ 2022 Qingcheng AE Institute. All Rights Reserved.