



Description and Features

The GM150 is a passive piezoelectric miniature AE sensor. The connector was designed on the top of the sensor and the small size makes it possible to work in narrow space.

Technical Specs

Resonant Freq. Ref V/(m/s)	150kHz
Frequency Range	70kHz-280kHz
Sensitivity Peak Ref V/(m/s)	>68dB
Working Temp.	-20 to 120°C
Size (DxH)	7.8×19mm
Weight	5 g
Case Material	SUS-304
Face Material	Ceramic
Protecting Grade	IP62
Connector	M5
Connector Location	Top

Accessories

Signal cable model	RG178/RG316
Hold-down	Saddle type
Preamplifier	PAS/PAV



Applications

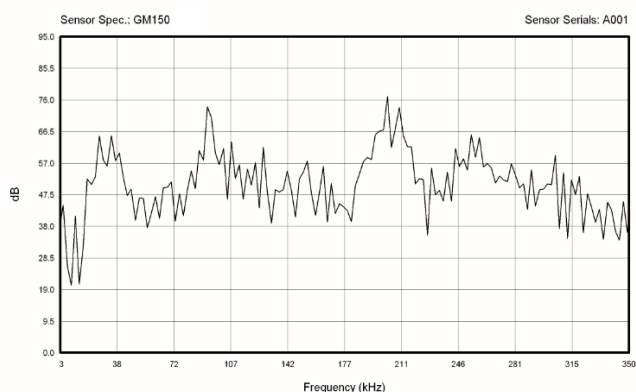
The sensor can be used for monitoring common structures such as pipelines, vessels, bridges, storage tanks etc. It can easily be mounted in small and tight space.



Standards

Calibration standard	ISO12714
	GB/T 19801

AE SENSOR CALIBRATION CERTIFICATE



Certification



QingCheng AE Institute (Guangzhou) Co., Ltd

Website: www.aendt.com **Tel:** +86-20-32290092 **E-mail:** sales2@ae-ndt.com **Skype:** Jessicajia
 Address: Room 601-9, Building 3, 232 Kezhu Road, Huangpu District, Guangzhou City, Guangdong Province, CHINA

Specifications subject to change without notice. Copyright @ 2022 Qingcheng AE Institute. All Rights Reserved.