



Description and Features

The GI150/1 is a narrowband integrated sensor with built-in 40dB28V preamplifier. It's smaller than GI150 and its 60 kHz-400 kHz bandwidth covering the frequency range of most AE applications.

Technical Specs

Resonant Freq. Ref V/(m/s)	150kHz
Frequency Range	60kHz-400kHz
Sensitivity Peak Ref V/(m/s)	>75dB
Integral preamplifier	40dB28V
Preamp. Impedance	50 Ω
Working Temp.	-20 to 50°C
Size (DxH)	22x25.5mm
Weight	38 g
Case Material	SUS-304
Face Material	Ceramic
Protecting Grade	IP62
Connector	SMA
Connector Location	Side



Applications

This sensor is well suited for detecting crack and fault of metallic equipment, and for structures health monitoring such as pipelines, pressure vessels, bridges etc.



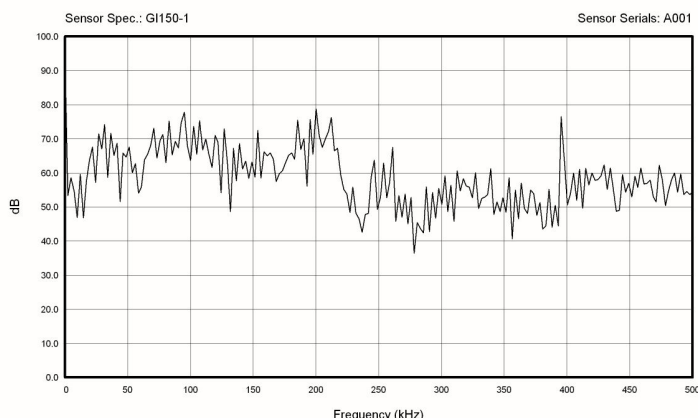
Standards

Calibration standard	ISO12714
	GB/T 19801

Accessories

Signal cable model	RG178/RG316
Hold-down	Saddle type

AE SENSOR CALIBRATION CERTIFICATE



NOTE: Sensitivity dB ref 1V/m/s

Certification



QingCheng AE Institute (Guangzhou) Co., Ltd

Website: www.aendt.com Tel: +86-20-32290092 E-mail: sales2@ae-ndt.com Skype: Jessicajia
Address: Room 601-9, Building 3, 232 Kezhu Road, Huangpu District, Guangzhou City, Guangdong Province, CHINA

Specifications subject to change without notice. Copyright @ 2022 Qingcheng AE Institute. All Rights Reserved.