



### Description and Features

The GD150 is a differential waterproof narrow band sensor with 2.2 meters cable, it is suitable for using in noisy environment, could effectively suppress the common-mode noise.

### Technical Specs

<b>Resonant Freq.</b> Ref V/(m/s)	150kHz
<b>Frequency Range</b>	60kHz-400kHz
<b>Sensitivity Peak</b> Ref V/(m/s)	>65dB
<b>Working Temp.</b>	-20 to 120°C
<b>Size (DxH)</b>	19×19.5mm
<b>Weight</b>	67g
<b>Case Material</b>	SUS-304
<b>Face Material</b>	Ceramic
<b>Protecting Grade</b>	IP68
<b>Connector</b>	Double-core BNC on integral cable
<b>Connector Location</b>	Side

### Applications



The GD150 is well suited for detecting high voltage partial discharge and other fields, especially for detecting metal crack under high noise. It could be easily mounted by a magnetic hold-down.

### Standards

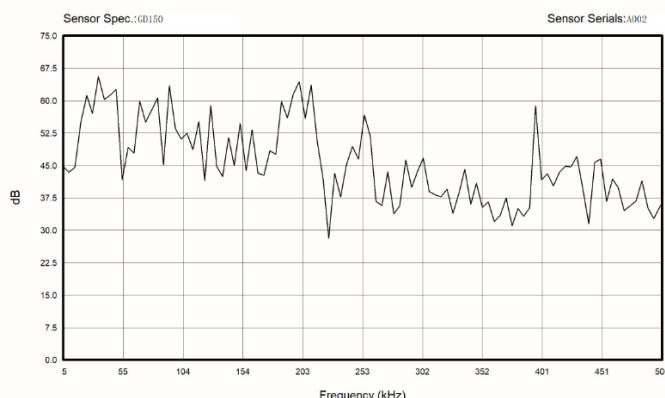


<b>Calibration standard</b>	ISO12714
	GB/T 19801

### Accessories

<b>Hold-down</b>	M20
<b>Preamplifier</b>	PAS/PAV

### AE SENSOR CALIBRATION CERTIFICATE



### Certification



QingCheng AE Institute (Guangzhou) Co., Ltd

**Website:** [www.aendt.com](http://www.aendt.com) **Tel:** +86-20-32290092 **E-mail:** [sales2@ae-ndt.com](mailto:sales2@ae-ndt.com) **Skype:** Jessicajia  
 Address: Room 601-9, Building 3, 232 Kezhu Road, Huangpu District, Guangzhou City, Guangdong Province, CHINA

Specifications subject to change without notice. Copyright @ 2022 Qingcheng AE Institute. All Rights Reserved.