



### Description and Features

The G80/1 is a passive piezoelectric AE sensor with narrowband. High protecting grade makes it possible to work in the water or underground. And 20kHz-180kHz bandwidth makes it well suited for detecting low frequency acoustic emission signals. It belongs to the low and medium frequency sensor.

### Technical Specs

<b>Resonant Freq. Ref V/(m/s)</b>	80kHz
<b>Frequency Range</b>	20kHz-180kHz
<b>Sensitivity Peak Ref V/(m/s)</b>	>70dB
<b>Working Temp. Size (DxH)</b>	-20 to 80°C 19×19.5mm
<b>Weight</b>	59g
<b>Case Material</b>	SUS-304
<b>Face Material</b>	Ceramic
<b>Protecting Grade</b>	IP68
<b>Connector</b>	BNC on integral cable
<b>Connector Location</b>	Side

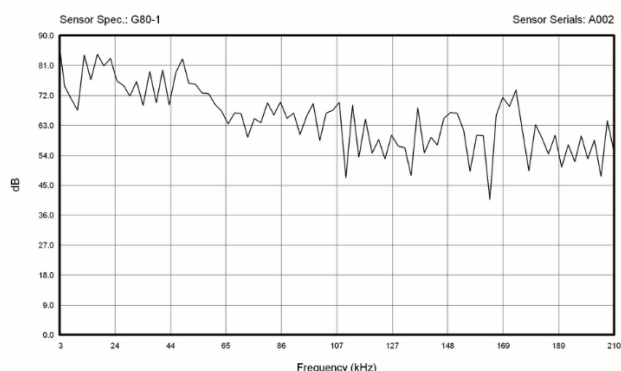
### Applications

The low frequency response makes it suitable for monitoring large objects or objects made of highly attenuating material, such as concrete steel and geologic structures. It also could be used for monitoring leakage of pressure vessels and for detecting partial discharge.

### Standards

<b>Calibration standard</b>	ISO12714
	GB/T 19801

### AE SENSOR CALIBRATION CERTIFICATE



### Accessories

<b>Signal cable model</b>	SYV-50-3/ STYV-50-2
<b>Hold-down</b>	M20A
<b>Preamplifier</b>	PAS/PAV

### Certification



QingCheng AE Institute (Guangzhou) Co., Ltd

**Website:** [www.aendt.com](http://www.aendt.com) **Tel:** +86-20-32290092 **E-mail:** [sales2@ae-ndt.com](mailto:sales2@ae-ndt.com) **Skype:** Jessicajia  
**Address:** Room 601-9, Building 3, 232 Kezhu Road, Huangpu District, Guangzhou City, Guangdong Province, CHINA

Specifications subject to change without notice. Copyright @ 2022 Qingcheng AE Institute. All Rights Reserved.